



Clean Air
Fume Cupboards

The Science of Fume Containment



Discovery Fume Cupboard



ISO 9001
ISO 14001
ISO 45001

 **MADE IN
BRITAIN**



Clean Air's Discovery Fume Cupboard is a streamlined, standardised model designed to deliver excellent performance, fast lead times, and outstanding containment – all with the quality and expertise you'd expect from Clean Air.

Featuring our registered design profiled inlet, the Discovery uses a smooth, sweeping curve at the sash entrance to optimise airflow and containment. This state-of-the-art enhancement minimises turbulence and improves operator protection, even at lower face velocities.

The Discovery offers a modern aesthetic while maintaining the robustness and reliability our customers trust.

Designed with flexibility in mind, the Discovery has a compact footprint and reduced overall height, making it ideal for labs with limited space or low ceilings – such as temporary buildings - without compromising performance. Its streamlined proportions also make it easy to install in existing lab layouts, whether space-constrained or open-plan.

Key Features

Clean Air's hallmark curved inlet for enhanced containment

- BS EN 14175 compliant
- Fast delivery times
- Compact height for smaller labs and lower ceilings
- Choice of features and service configurations
- Full-access, removable service panels for straightforward maintenance
- Sleek, updated design with the same Clean Air durable build quality

Whether for teaching labs, commercial use, or research applications, the Discovery Fume Cupboard combines efficient performance with several customisable options for flexibility - an ideal fit for today's containment needs.

Customise to your application

- Variable Air Volume (VAV) technology for energy efficiency
- Trespa® TopLab® PLUS worktop
- Up to ten mechanical services
- Small circular dripcup or sink
- Scaffold bosses and frames
- 316-grade stainless steel hinged lower aerofoil for cable entry
- 316-grade stainless steel tissue guards to prevent debris from being drawn into the extract ductwork
- Anti-shatter film for glass panels
- Standard steel storage cupboards
- Fire-rated solvent storage cupboards and polypropylene acid storage cupboards*
- Infill panels from unit to ceiling*

**These options may affect lead times -ask us for more information*

All This as Standard

- 6mm toughened glass sliding sash
- Curved sash entrance providing good containment.
- Sash stop device at 500 mm
- Fire-resistant twin skin shell
- Interior liners & baffles from Trespa® TopLab® BASE solid grade laminate
- Cast epoxy worktop
- Two double socket outlets
- Flush membrane control panel
- Excellent containment levels - meets BS EN 14175
- Energy-efficient, long-life LED flat panel lighting
- External carcass constructed from polyester powder-coated zintec steel
- 12-month free warranty

Controls

- AFA500 - Audible and visual indication of airflow Safe/Fail and Sash High

Upgrade to the AFA1000 to add more features, including face velocity and alarms display

BACnet MS/TP and Modbus RTU option available.

Servicing

A Clean Air service includes much more than simply face velocity testing – ask us for details.

- Full service and maintenance packages available
- Options to lock in prices
- Highly trained test engineers
- Never over-run your test date with our free test scheduling service
- Most makes and models of fume cupboard serviced

Discovery Fume Cupboard Technical Specification



Discovery Dimensions

External width	1200mm	1500mm	1800mm	2000mm
External height	2100mm (2405mm Sash Fully Open)			
External depth	900mm			
Chamber width	900mm	1200mm	1500mm	1700mm
Chamber Height	1100mm (Worktop to Soffit)			
Chamber depth	660mm (Sash to Baffle)			
Sash Opening Width	900mm	1200mm	1500mm	1700mm
Max Sash Opening Height	690mm			

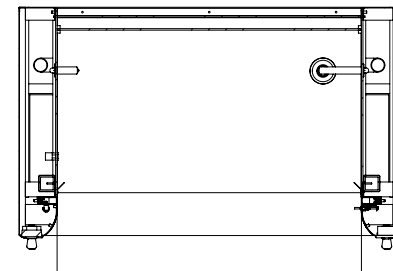
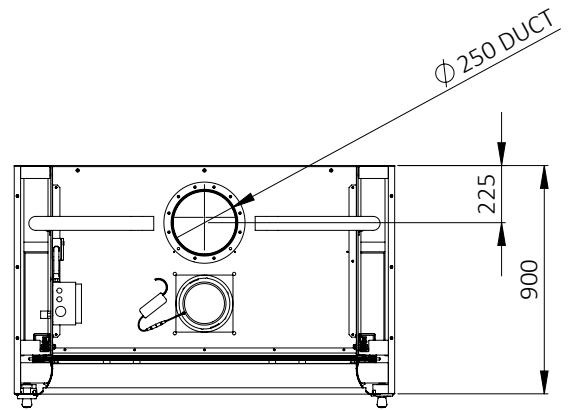
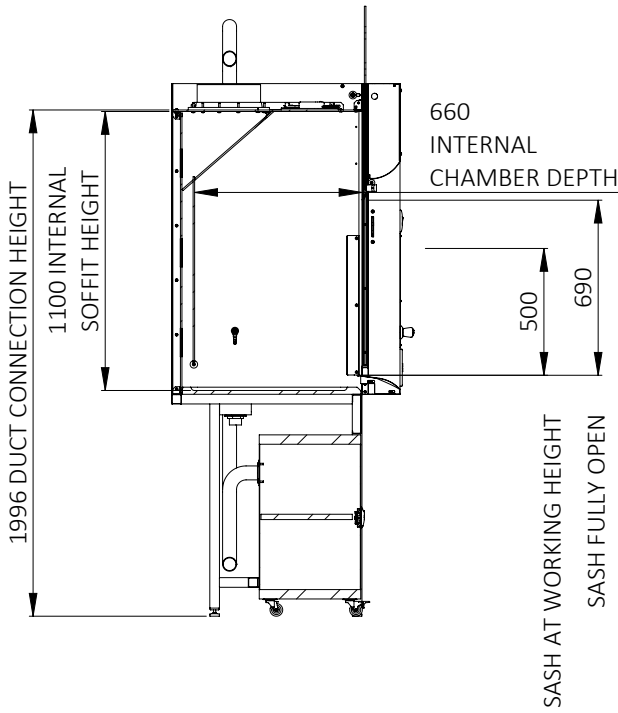
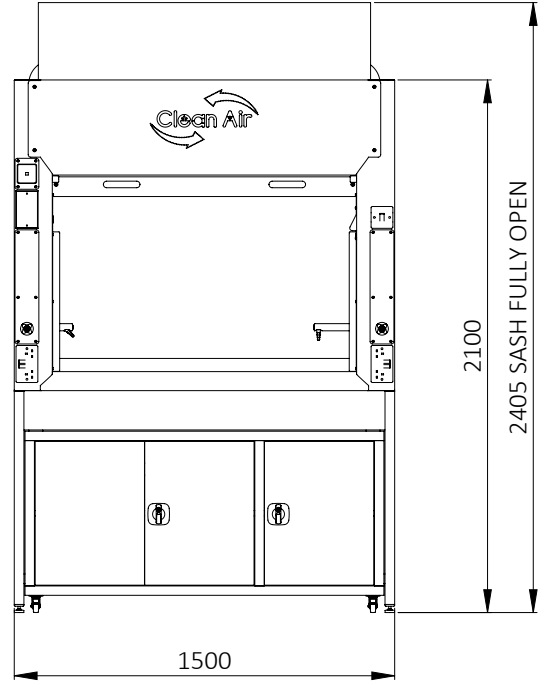
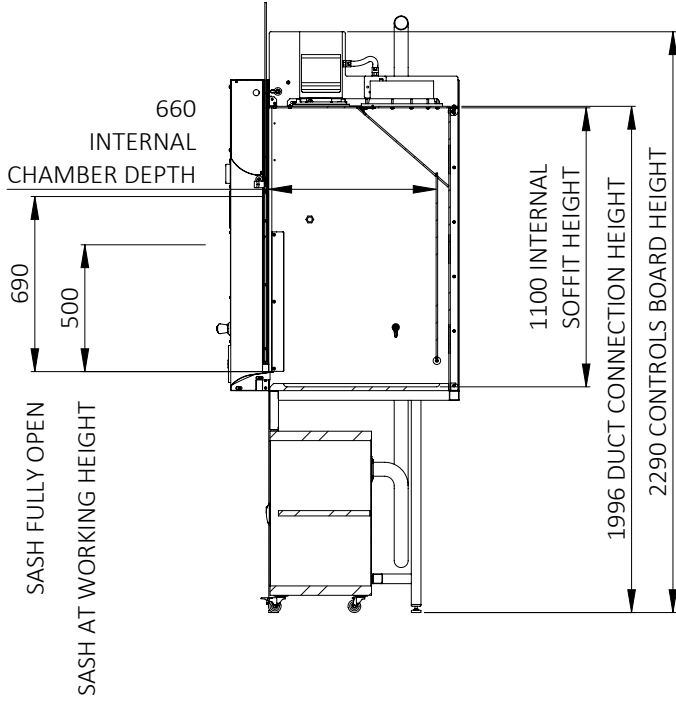
Discovery Extract Volumes

	Face Velocity	1200mm	1500mm	1800mm	2000mm
Extract Volumes at a 500mm sash opening	0.30m/s	0.153m ³ /s	0.203m ³ /s	0.254m ³ /s	0.288m ³ /s
	0.35m/s	0.178m ³ /s	0.237m ³ /s	0.297m ³ /s	0.336m ³ /s
	0.40m/s	0.203m ³ /s	0.271m ³ /s	0.339m ³ /s	0.384m ³ /s
	0.50m/s	0.254m ³ /s	0.339m ³ /s	0.424m ³ /s	0.480m ³ /s

Discovery Fume Cupboard Technical Specification



The Science of Fume Containment



☎ 01204 572900
✉ sales@cleanairltd.co.uk
🌐 www.cleanairltd.co.uk

The contents of this document are the property of Clean Air Ltd and are copyright. Clean Air Ltd reserves the right to change any part of this document without notice at any time. While Clean Air makes every reasonable effort to ensure that this material is accurate, Clean Air accepts no liability for technical inaccuracies or typographical errors.